



CONCRETE BLOCK  
ASSOCIATION

# Aggregate Block Wall Solutions For Part E

## For New Build Housing

Building Regulations (England and Wales) 2000 - Resistance to the  
Passage of Sound - Approved Document E: 2003 edition

# Part E Regulations

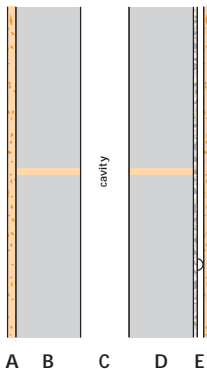
- The new Approved Document introduces minimum performance requirements for some partitions and for intermediate floors.
- Robust Standard Details (RSDs) have been developed to avoid the requirement for pre-completion testing of dwellings at a nominal rate of 1 in 10 of new constructions.

## Guideline RSD solutions

### Cavity wall using dense aggregate blockwork

- A Finish** 13mm lightweight plaster (or minimum 6mm parge\* coat plus 12.5mm plasterboard on dabs)
- B Blockwork** 100mm (min) dense blockwork
- C Cavity** 75mm cavity
- D Blockwork** 100mm (min) dense blockwork
- E Finish** Minimum 6mm parge\* coat plus 12.5mm plasterboard on dabs (or 13mm lightweight plaster)

13 100 75 100 6 12.5



\*An untrowelled 1:1:6 plaster/render coat.

Changes to the Building Regulations for England and Wales require dwellings to be designed and constructed to new standards so as to reduce the levels of transmission of sound between and within dwellings.

## New separating wall minimum values for airborne sound insulation

Purpose built dwellings  
**45  $D_{nT\bar{w}}$  +  $C_{tr}$  dB**

The RSDs are designed to exceed this figure to ensure compliance

## For relevant internal partitions

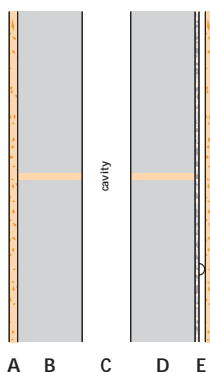
**40  $R_w$  dB**

to achieve a minimum value of 45  $D_{nT\bar{w}}$  +  $C_{tr}$  dB for separating walls

## Cavity wall using lightweight aggregate blockwork

- A Finish** 13mm lightweight plaster (or minimum 6mm parge\* coat plus 12.5mm plasterboard on dabs)
- B Blockwork** 100mm (min) lightweight blockwork (density 1350kg/m<sup>3</sup> - 1600kg/m<sup>3</sup>)
- C Cavity** 75mm cavity
- D Blockwork** 100mm (min) lightweight blockwork (density 1350kg/m<sup>3</sup> - 1600kg/m<sup>3</sup>)
- E Finish** Minimum 6mm parge\* coat plus 12.5mm plasterboard on dabs (or 13mm lightweight plaster)

13 100 75 100 6 12.5



- Notes:**
1. The above cavity wall design solutions are based on the use of butterfly wall ties.
  2. For detailed constructions contact your materials supplier.



CONCRETE BLOCK  
ASSOCIATION

## About Aggregate Concrete Blocks

Aggregate concrete blocks are the most economical solution for builders.

They have the best acoustic properties, provide an excellent background for fixings and have excellent resistance to fire. Aggregate blocks are strong, durable, ideal for all wet finishes and for dry lining, and easy to lay and position on mortar.

A single block type can be used in every situation on site for housing applications, helping to control costs, improve delivery scheduling and reducing the risk of products being used in error. Aggregate blocks are ideally suited to the construction of inner leaves, outer leaves, separating walls, beam and block flooring, partitions and for use below dpc.

Above all, aggregate concrete blocks are a tried and tested solution, a significant and reassuring advantage lacked by many of the untried alternatives.

## About this Publication

This document is intended as a general guide to the use of aggregate concrete blocks for the construction of separating walls. For guidance on the use of aggregate blocks for construction of other wall types, please refer to our web site.

The material for this guide has been extracted from detailed technical data, which will be published on the Concrete Block Association web site in due course. Visit [www.cba-blocks.org.uk](http://www.cba-blocks.org.uk) or call our helpline on 0116 253 6161 for more information.

## About the Concrete Block Association

We are the trade body which represents manufacturers of aggregate concrete blocks and suppliers allied to the industry. We are committed to ensure that both standards and service provided by our members reflect the importance of our product to the construction industry.

Issued by:

©The Concrete Block Association February 2004

Although the Concrete Block Association does its best to ensure that any advice, recommendation or information it may give is accurate, no liability or responsibility of any kind (including liability for negligence) is accepted in this respect by the Association, its servants or agents.