

Certificate No: CBA-E21-C-A1

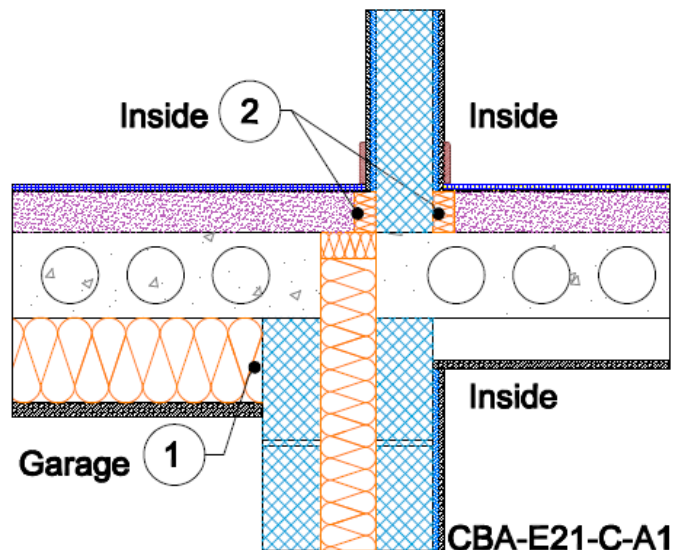
Issued : January 2016

Issued by Concrete Block Association

Exposed Floor (inverted) Table K.1 Ref E21 Approved ψ -value = 0.32 W/mK	Inner leaf	100 mm blockwork
	Cavity	Full fill insulation
	Outer leaf	100 mm block
	Semi exposed floor	Precast hollow core concrete floor with garage below and 150mm of insulation, $\lambda = 0.037$ below the hollow core deck

Key Points

1. Ensure that the floor insulation is tightly butted to the wall
2. Install perimeter insulation with a resistance of at least 0.8 m²K/W at the edges of the screed



Calculations have been performed in accordance with:
BS EN ISO 10211:2007, BR497 and BS EN ISO 13370:2007

Calculation prepared by : Chris Sanders B.Sc, M.Sc. GCU, Cowcaddens Rd, Glasgow G4 0BA
For more information contact 0116 232 5165 (CBA).

Calculated ψ -values and f-values for exposed floor (inverted) and **cavity insulation** as highlighted

Cavity Insulation	Inner leaf blockwork					
	Ultra lightweight		Lightweight		Dense	
	ψ -value W/mK	f-value	ψ -value W/mK	f-value	ψ -value W/mK	f-value
100mm $\lambda=0.037$	0.050	0.951	0.130	0.930	0.254	0.898
100mm $\lambda=0.032$	0.052	0.951	0.132	0.930	0.256	0.897
150mm $\lambda=0.037$	0.046	0.951	0.127	0.931	0.252	0.900
150mm $\lambda=0.032$	0.047	0.951	0.129	0.931	0.253	0.899

The f-value should be above 0.75 to minimise the risk of mould in dwellings.

On-site Checklist

1. Floor insulation is tightly butted to the wall
2. Perimeter insulation with a resistance of at least 0.8 m²K/W installed at the edges of the screed

Signed:

Site manager/supervisor.....

Site name.....

Plot Number.....

Date.....