

Certificate No: CBA-E21-T-A1

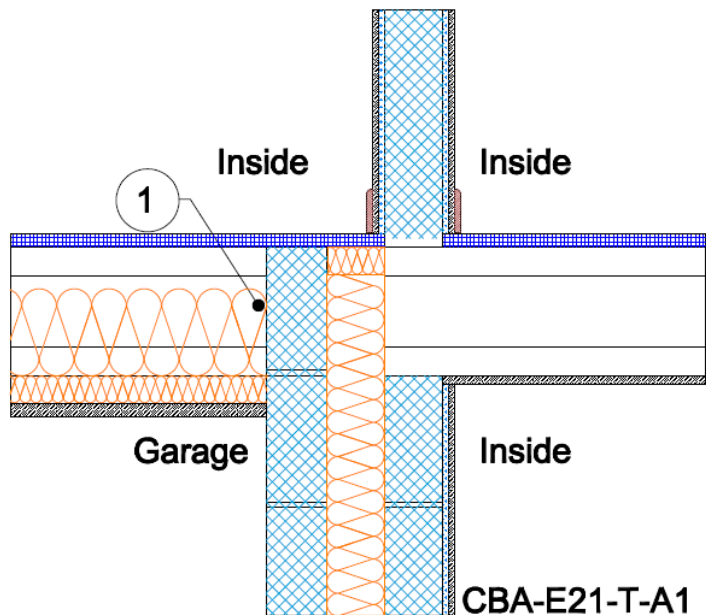
Issued : January 2016

Issued by Concrete Block Association

Exposed Floor (inverted) Table K.1 Ref E21 Approved ψ -value = 0.32 W/mK	Inner leaf	100 mm blockwork
	Cavity	Insulation
	Outer leaf	100 mm block
	Semi exposed floor	Timber with 45mm wide joists on hangers with garage below and 150mm of insulation, $\lambda = 0.037$ between the joists and 25mm of insulation, $\lambda = 0.022$ below the joists

Key Point

1. Ensure that the floor insulation is tightly butted to the wall



Calculations have been performed in accordance with:
BS EN ISO 10211:2007, BR497 and BS EN ISO 13370:2007

Calculation prepared by : Chris Sanders B.Sc, M.Sc. GCU, Cowcaddens Rd, Glasgow G4 0BA
For more information contact 0116 232 5165 (CBA).

Calculated ψ -values and f -values for exposed floor (inverted) and **cavity insulation** as highlighted

	Inner leaf blockwork					
	Ultra lightweight		Lightweight		Dense	
Cavity Insulation	ψ -value W/mK	f -value	ψ -value W/mK	f -value	ψ -value W/mK	f -value
100mm $\lambda=0.037$	0.065	0.905	0.127	0.846	0.205	0.771
100mm $\lambda=0.032$	0.065	0.904	0.126	0.844	0.203	0.770
150mm $\lambda=0.037$	0.056	0.902	0.116	0.842	0.194	0.768
150mm $\lambda=0.032$	0.055	0.902	0.115	0.841	0.192	0.766

The f -value should be above 0.75 to minimise the risk of mould in dwellings.

On-site Checklist

1. Floor insulation is tightly butted to the wall

Signed:

Site manager/supervisor.....

Site name.....

Plot Number.....

Date.....