

Certificate No: CBA-E21-T-B1

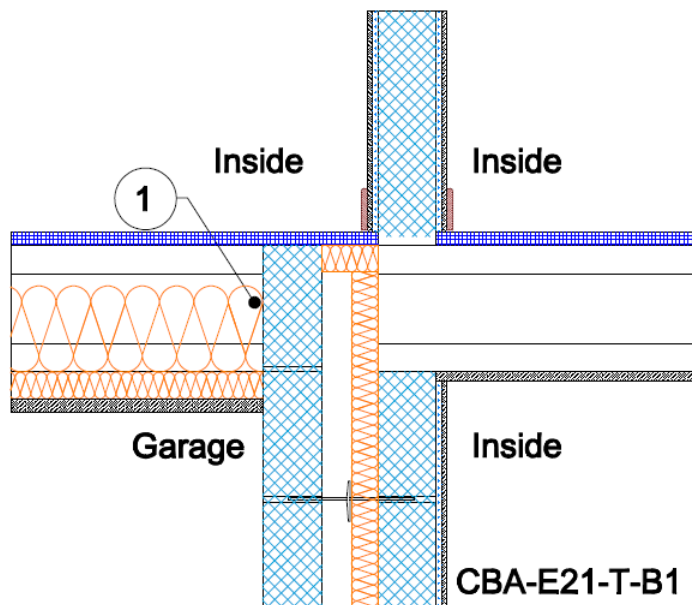
Issued : January 2016

Issued by Concrete Block Association

Exposed Floor (inverted) Table K.1 Ref E21 Approved ψ -value = 0.32 W/mK	Inner leaf	100 mm blockwork
	Cavity	Partial cavity fill with low-e facing and 50mm cavity
	Outer leaf	100 mm block
	Semi exposed floor	Timber with 45mm wide joists on hangers with garage below and 150mm of insulation, $\lambda = 0.037$ between the joists and 25mm of insulation, $\lambda = 0.022$ below the joists

Key Point

1. Ensure that the floor insulation is tightly butted to the wall



Calculations have been performed in accordance with:
BS EN ISO 10211:2007, BR497 and BS EN ISO 13370:2007

Calculation prepared by : Chris Sanders B.Sc, M.Sc. GCU, Cowcaddens Rd, Glasgow G4 0BA
For more information contact 0116 232 5165 (CBA).

Calculated ψ -values and f-values for exposed floor (inverted) and **cavity insulation** as highlighted

Cavity Insulation	Inner leaf blockwork					
	Ultra lightweight		Lightweight		Dense	
	ψ -value W/mK	f-value	ψ -value W/mK	f-value	ψ -value W/mK	f-value
50mm $\lambda=0.022$	0.070	0.902	0.132	0.844	0.209	0.770
100mm $\lambda=0.022$	0.061	0.898	0.121	0.838	0.196	0.765

The f-value should be above 0.75 to minimise the risk of mould in dwellings.

On-site Checklist

1. Floor insulation is tightly butted to the wall

Signed:

Site manager/supervisor.....

Site name.....

Plot Number.....

Date.....