

Certificate No: CBA-E24-2-S-A

Issued : January 2016

Issued by Concrete Block Association

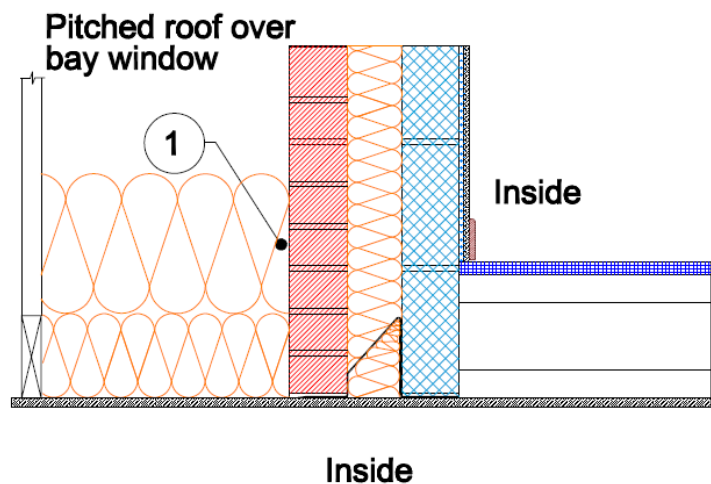
Eaves (Insulation at ceiling level - inverted)

Table K.1 Ref E24
Default ψ -value =
0.24 W/mK

Inner leaf	100 mm blockwork
Cavity	Full fill insulation
Outer leaf	102 mm brick $\lambda = 0.77$
Lintel	Folded steel with perforated base plate
Roof	Pitched roof over bay window 150 mm of insulation with $\lambda = 0.037$ between 45mm wide joists. 250mm over joists

Key Point

1. Ensure the roof insulation is tightly butted to the wall



Calculations have been performed in accordance with:
BS EN ISO 10211:2007, BR497 and BS EN ISO 13370:2007

Calculation prepared by : Chris Sanders B.Sc, M.Sc. GCU, Cowcaddens Rd, Glasgow G4 0BA
For more information contact 0116 232 5165 (CBA).

Calculated ψ -values and f-values for eaves (insulation at ceiling level – inverted) and **cavity insulation** as highlighted

Cavity Insulation	Inner leaf blockwork					
	Ultra lightweight		Lightweight		Dense	
	ψ -value W/mK	f-value	ψ -value W/mK	f-value	ψ -value W/mK	f-value
100mm $\lambda=0.037$	0.170	0.944	0.171	0.947	0.173	0.950
100mm $\lambda=0.032$	0.169	0.944	0.171	0.947	0.174	0.949
150mm $\lambda=0.037$	0.166	0.943	0.167	0.945	0.169	0.948
150mm $\lambda=0.032$	0.165	0.943	0.167	0.945	0.169	0.947

The f-value should be above 0.75 to minimise the risk of mould in dwellings.

On-site Checklist

1. Roof insulation is tightly butted to the wall

Signed:

Site manager/supervisor.....

Site name.....

Plot Number.....

Date.....