

**Certificate No: CBA-E25-1038-A**

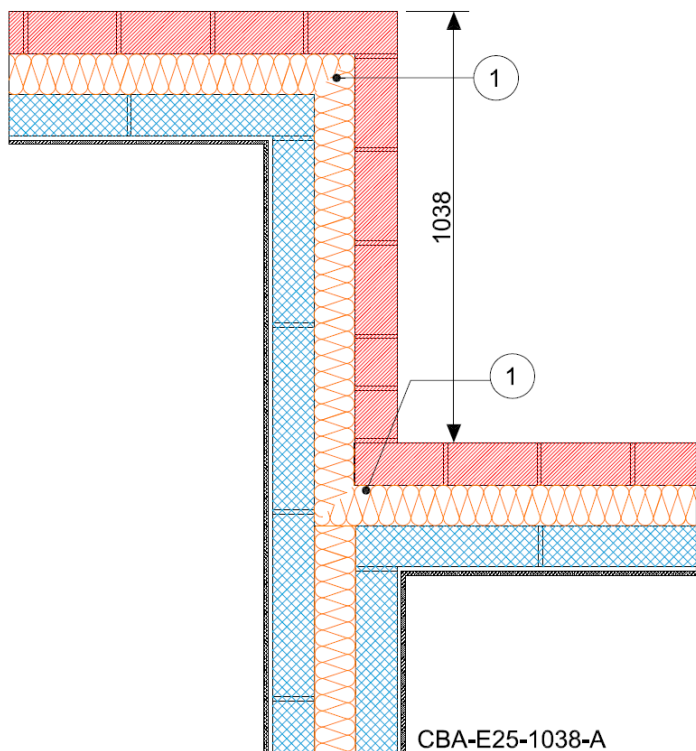
**Issued : January 2016**

**Issued by Concrete Block Association**

<b>Staggered separating wall between dwellings</b> Table K.1 Ref E25 Default $\psi$ -value = 0.12 W/mK	Inner leaf	100 mm blockwork
	Cavity	Full fill insulation
	Outer leaf	102 mm brick $\lambda = 0.77$
	Separating wall	Full fill mineral wool insulation

**Key Point**

1. Ensure that the cavity insulation is continuous throughout the junction



Calculations have been performed in accordance with:  
BS EN ISO 10211:2007, BR497 and BS EN ISO 13370:2007

Calculation prepared by : Chris Sanders B.Sc, M.Sc. GCU, Cowcaddens Rd, Glasgow G4 0BA  
For more information contact 0116 232 5165 (CBA)

Calculated  $\psi$ -values and f-values for staggered separating walls and cavity insulation as highlighted

**\*Half the value shown should be applied to each dwelling**

**1. With lightweight blocks in separating wall  $\lambda = 0.6 \text{ W/mK}$**

Cavity Insulation	Inner leaf blockwork					
	Ultra lightweight		Lightweight		Dense	
	$\psi$ -value W/mK*	f-value	$\psi$ -value W/mK*	f-value	$\psi$ -value W/mK*	f-value
100mm $\lambda=0.037$	0.139	0.908	0.146	0.908	0.151	0.912
100mm $\lambda=0.032$	0.126	0.917	0.132	0.918	0.137	0.921
150mm $\lambda=0.037$	0.103	0.930	0.108	0.931	0.111	0.934
150mm $\lambda=0.032$	0.093	0.937	0.098	0.938	0.099	0.942

**2. With dense blocks in separating wall  $\lambda = 1.33 \text{ W/mK}$**

Cavity Insulation	Inner leaf blockwork					
	Ultra lightweight		Lightweight		Dense	
	$\psi$ -value W/mK*	f-value	$\psi$ -value W/mK*	f-value	$\psi$ -value W/mK*	f-value
100mm $\lambda=0.037$	0.145	0.915	0.152	0.914	0.156	0.916
100mm $\lambda=0.032$	0.130	0.924	0.137	0.923	0.141	0.926
150mm $\lambda=0.037$	0.107	0.936	0.111	0.936	0.114	0.938
150mm $\lambda=0.032$	0.095	0.943	0.099	0.943	0.100	0.945

The f-value should be above 0.75 to minimise the risk of mould in dwellings.

## On-site Checklist

1. Cavity insulation is continuous throughout the junction

**Signed:**

**Site manager/supervisor.....**

**Site name.....**

**Plot Number.....**

**Date.....**