

Certificate No: CBA-E25-338-A

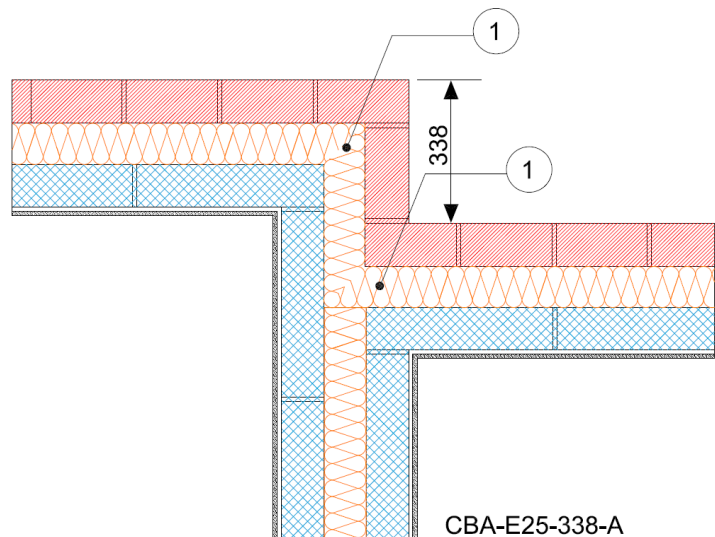
Issued : January 2016

Issued by Concrete Block Association

Staggered separating wall between dwellings Table K.1 Ref E25 Default ψ -value = 0.12 W/mK	Inner leaf	100 mm blockwork
	Cavity	Full fill insulation
	Outer leaf	102 mm brick $\lambda = 0.77$
	Separating wall	Full fill mineral wool insulation

Key Point

1. Ensure that the cavity insulation is continuous throughout the junction



Calculations have been performed in accordance with:
BS EN ISO 10211:2007, BR497 and BS EN ISO 13370:2007

Calculation prepared by : Chris Sanders B.Sc, M.Sc. GCU, Cowcaddens Rd, Glasgow G4 0BA
For more information contact 0116 232 5165 (CBA)

Calculated ψ -values and f-values for staggered separating walls and **cavity insulation** as highlighted

***Half the value shown should be applied to each dwelling**

1. With lightweight blocks in separating wall $\lambda = 0.6 \text{ W/mK}$

Cavity Insulation	Inner leaf blockwork					
	Ultra lightweight		Lightweight		Dense	
	ψ -value W/mK*	f-value	ψ -value W/mK*	f-value	ψ -value W/mK*	f-value
100mm $\lambda=0.037$	0.137	0.911	0.150	0.918	0.159	0.928
100mm $\lambda=0.032$	0.125	0.919	0.137	0.926	0.144	0.936
150mm $\lambda=0.037$	0.106	0.933	0.114	0.940	0.119	0.948
150mm $\lambda=0.032$	0.097	0.940	0.103	0.946	0.108	0.954

2. With dense blocks in separating wall $\lambda = 1.33 \text{ W/mK}$

Cavity Insulation	Inner leaf blockwork					
	Ultra lightweight		Lightweight		Dense	
	ψ -value W/mK*	f-value	ψ -value W/mK*	f-value	ψ -value W/mK*	f-value
100mm $\lambda=0.037$	0.138	0.911	0.152	0.918	0.161	0.929
100mm $\lambda=0.032$	0.126	0.919	0.138	0.926	0.146	0.936
150mm $\lambda=0.037$	0.107	0.933	0.115	0.940	0.120	0.949
150mm $\lambda=0.032$	0.097	0.940	0.104	0.947	0.108	0.955

The f-value should be above 0.75 to minimise the risk of mould in dwellings.

On-site Checklist

1. Cavity insulation is continuous throughout the junction

Signed:

Site manager/supervisor.....

Site name.....

Plot Number.....

Date.....