

Certificate No: CBA-213

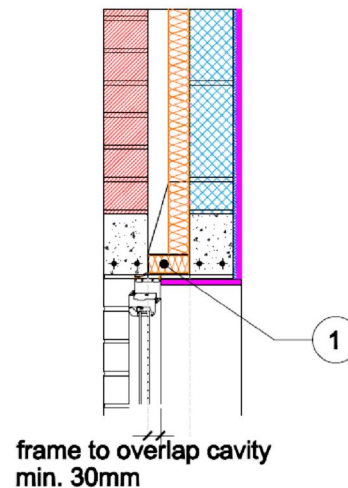
Issued : August 2014

Issued by Concrete Block Association

Independent concrete lintels Table K.1 Ref E2 Approved ψ -value = 0.30 W/mK	Inner leaf	100 mm Blockwork
	Cavity	Full fill insulation, see table for options
	Outer leaf	102 mm Brick = 0.77
	Lintel	Independent concrete lintels with soffit insulation

Key Points

- 1 Close the cavity with insulation with $\lambda \leq 0.026$
- 2 Fill gaps around and between lintels with tightly packed insulation



Calculations have been performed in accordance with:
BS EN ISO 10211:2007, BR497 and BS EN ISO 13370:2007

Calculation prepared by: Chris Sanders B.Sc, M.Sc, GCU, Cowcaddens Rd, Glasgow G4 0BA.
For more information contact **0116 232 5165** (C.B.A)

Calculated ψ -values and f-values for different blockwork, and **cavity insulation** as highlighted

	Inner leaf blockwork					
	Ultra lightweight		Lightweight		Dense	
Cavity Insulation ↓	ψ -value W/mK	f-value	ψ -value W/mK	f-value	ψ -value W/mK	f-value
50mm =0.022	0.022	0.914	0.017	0.914	0.015	0.914
100mm =0.022	0.024	0.907	0.022	0.907	0.021	0.907

The f-value should be above 0.75 to minimise the risk of mould in dwellings.

NOTE: Because heat loss through windows and their frames is assessed separately, heat loss through the frame is not taken into account in the calculation of the ψ -value and f-value.

On-site Checklist

- Cavity closed with insulation with $\psi=0.026$
- All gaps around and between lintels filled with tightly packed insulation

Site manager/supervisor.....

Site name.....

Plot number.....

Date.....