

Certificate No: CBA-E20-T-A3

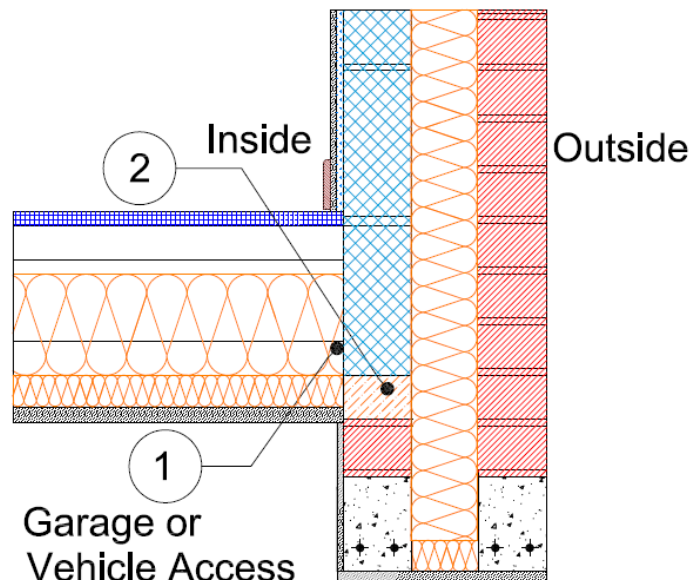
Issued : January 2016

Issued by Concrete Block Association

Exposed Floor (normal) Table K.1 Ref E20 Approved ψ -value = 0.32 W/mK	Inner leaf	100 mm blockwork
	Cavity	Full fill insulation
	Outer leaf	102 mm brick $\lambda = 0.77$
	Semi-exposed or exposed floor	Timber with 45mm wide joists on hangers with concrete lintel and garage or vehicle access below. 150mm of insulation, $\lambda = 0.037$ between the joists and 25mm of insulation, $\lambda = 0.022$ below the joists

Key Points

1. Ensure the floor insulation is tightly butted to the wall
2. Install 65mm Perinsul load bearing insulation over the lintel (when specified)



CBA-E20-T-A3

Calculations have been performed in accordance with:
BS EN ISO 10211:2007, BR497 and BS EN ISO 13370:2007

Calculation prepared by : Chris Sanders B.Sc, M.Sc. GCU, Cowcaddens Rd, Glasgow G4 0BA
For more information contact 0116 232 5165 (CBA).

Calculated ψ -values and f-values exposed floor (normal) and **cavity insulation** as highlighted

1. No insulation above the lintel

Cavity Insulation	Inner leaf blockwork					
	Ultra lightweight		Lightweight		Dense	
	ψ -value W/mK	f-value	ψ -value W/mK	f-value	ψ -value W/mK	f-value
100mm $\lambda=0.037$	0.099	0.839	0.151	0.825	0.228	0.820
100mm $\lambda=0.032$	0.100	0.841	0.154	0.828	0.232	0.822
150mm $\lambda=0.037$	0.105	0.844	0.160	0.831	0.241	0.826
150mm $\lambda=0.032$	0.105	0.846	0.161	0.833	0.243	0.828

2. With load bearing insulation above the lintel

Cavity Insulation	Inner leaf blockwork					
	Ultra lightweight		Lightweight		Dense	
	ψ -value W/mK	f-value	ψ -value W/mK	f-value	ψ -value W/mK	f-value
100mm $\lambda=0.037$	0.071	0.867	0.084	0.875	0.097	0.889
100mm $\lambda=0.032$	0.071	0.871	0.084	0.879	0.096	0.893
150mm $\lambda=0.037$	0.074	0.875	0.087	0.884	0.099	0.898
150mm $\lambda=0.032$	0.073	0.878	0.087	0.888	0.099	0.901

The f-value should be above 0.75 to minimise the risk of mould in dwellings.

On-site Checklist

- 1. Floor insulation is tightly butted to the wall
- 2. 65mm Perinsul load bearing insulation installed over the lintel (when specified)

Signed:

Site manager/supervisor.....

Site name.....

Plot number.....

Date.....