

Certificate No: CBA-214

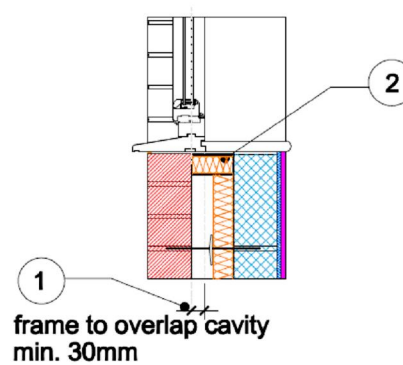
Issued : August 2014

Issued by Concrete Block Association

Window sill Table K.1 Ref E3 Approved ψ -value $= 0.04 \text{ W/mK}$	Inner leaf	100 mm Blockwork
	Cavity	Partial Fill insulation, see table for options
	Outer leaf	102 mm Brick $= 0.77$

Key Points

- 1 Minimum frame overlap to be 30mm.
- 2 Close the cavity with insulation with $\lambda \leq 0.026$



Calculations have been performed in accordance with:
BS EN ISO 10211:2007, BR497 and BS EN ISO 13370:2007

Calculation prepared by: Chris Sanders B.Sc, M.Sc, GCU, Cowcaddens Rd, Glasgow G4 0BA.
For more information contact **0116 232 5165** (C.B.A)

Calculated ψ -values and f-values for window sill detail, and **cavity insulation** as highlighted

	Inner leaf blockwork					
	Ultra lightweight		Lightweight		Dense	
Cavity Insulation ↓	ψ -value W/mK	f-value	ψ -value W/mK	f-value	ψ -value W/mK	f-value
50mm =0.022	0.019	0.887	0.018	0.888	0.018	0.888
100mm =0.022	0.027	0.882	0.027	0.882	0.027	0.882

The f-value should be above 0.75 to minimise the risk of mould in dwellings.

NOTE: Because heat loss through windows and their frames is assessed separately, heat loss through the frame is not taken into account in the calculation of the ψ -value and f-value.

On-site Checklist

- Frame overlap at least 30mm
- Cavity closed with insulation with ψ 0.026

Site manager/supervisor.....

Site name.....

Plot number.....

Date.....