

Certificate No: CBA-P8-T-A2

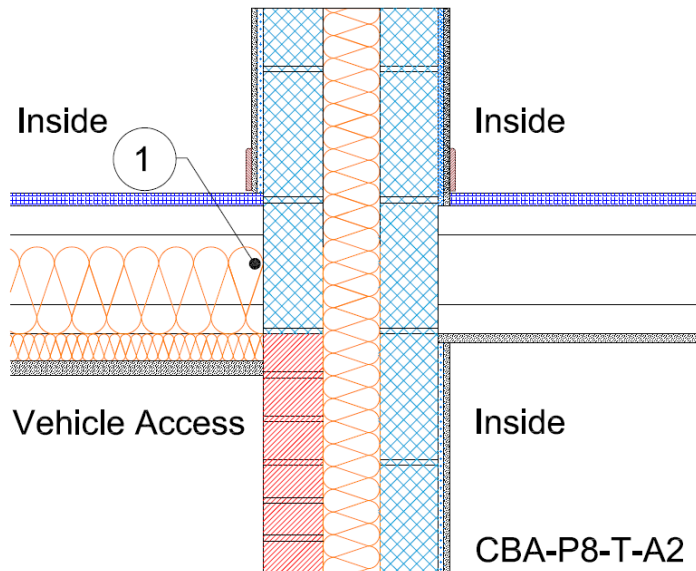
Issued : January 2016

Issued by Concrete Block Association

Exposed floor (Inverted) Table K.1 Ref P8 Default ψ -value = 0.24 W/mK	Inner leaf	100 mm blockwork
	Cavity	Full fill insulation
	Outer leaf	102 mm brick $\lambda = 0.77$
	Exposed floor	Timber with 45mm wide joists on hangers over vehicle access with 150mm of insulation, $\lambda = 0.037$ between the joists and 25mm of insulation, $\lambda = 0.022$ below the joists

Key Point

1. Ensure the floor insulation is tightly butted to the wall



Calculations have been performed in accordance with:
BS EN ISO 10211:2007, BR497 and BS EN ISO 13370:2007

Calculation prepared by : Chris Sanders B.Sc, M.Sc. GCU, Cowcaddens Rd, Glasgow G4 0BA
For more information contact 0116 232 5165 (CBA)

Calculated ψ -values and f-values for exposed floor (inverted) and **cavity insulation** as highlighted

*The ψ -value applied to each dwelling around the junction should be allocated as follows:

- 2 dwellings – 2/3 of tabulated value to dwelling occupying 2 segments around junction and 1/3 of tabulated value to dwelling occupying 1 segment around junction
- 3 dwellings – 1/3 of tabulated value to each dwelling

1. With lightweight blocks in the separating wall $\lambda = 0.6$ W/mK

Cavity Insulation	Inner leaf blockwork					
	Ultra lightweight		Lightweight		Dense	
	ψ -value W/mK*	f-value	ψ -value W/mK*	f-value	ψ -value W/mK*	f-value
100mm $\lambda=0.037$	0.175	0.877	0.174	0.877	0.174	0.877
100mm $\lambda=0.032$	0.173	0.875	0.172	0.875	0.172	0.875
150mm $\lambda=0.037$	0.171	0.872	0.170	0.872	0.170	0.873
150mm $\lambda=0.032$	0.168	0.871	0.168	0.871	0.168	0.871

2. With dense blocks in the separating wall $\lambda = 1.33$ W/mK

Cavity Insulation	Inner leaf blockwork					
	Ultra lightweight		Lightweight		Dense	
	ψ -value W/mK*	f-value	ψ -value W/mK*	f-value	ψ -value W/mK*	f-value
100mm $\lambda=0.037$	0.263	0.863	0.262	0.863	0.262	0.863
100mm $\lambda=0.032$	0.261	0.862	0.260	0.862	0.260	0.862
150mm $\lambda=0.037$	0.259	0.859	0.258	0.859	0.259	0.859
150mm $\lambda=0.032$	0.257	0.858	0.257	0.858	0.257	0.858

The f-value should be above 0.75 to minimise the risk of mould in dwellings.

On-site Checklist

1. Floor insulation is tightly butted to the wall

Signed:

Site manager/supervisor.....

Site name.....

Plot number.....

Date.....