

Certificate No: CBA-312A

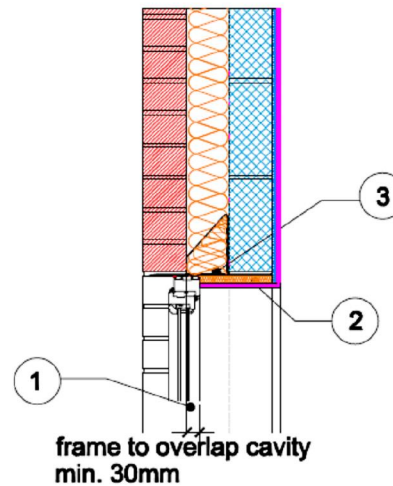
Issued: August 2014

Issued by Concrete Block Association

Insulated Steel Lintel Table K.1 Ref E1 Approved ψ -value = 0.50 W/mK	Inner leaf	100 mm Blockwork
	Cavity	Full fill insulation, see table for options
	Outer leaf	102 mm Brick = 0.77
	Lintel	Folded steel 2mm thick with perforated baseplate

Key Points

- 1 Minimum frame overlap to be 30mm.
- 2 Apply insulation with R-value of at least 0.5m K/W to soffit.
- 3 The equivalent conductivity of the base plate should be no more than 10 W/mK.



Calculations have been performed in accordance with:
BS EN ISO 10211:2007, BR497 and BS EN ISO 13370:2007

Calculation prepared by: Chris Sanders B.Sc, M.Sc, GCU, Cowcaddens Rd, Glasgow G4 0BA.
For more information contact **0116 232 5165** (C.B.A)

**Calculated ψ -values and f-values for perforated base plate lintel, and
cavity insulation as highlighted**

Cavity Insulation ↓	Inner leaf blockwork					
	Ultra lightweight		Lightweight		Dense	
	ψ -value W/mK	f-value	ψ -value W/mK	f-value	ψ -value W/mK	f-value
100mm =0.037	0.292	0.896	0.346	0.883	0.396	0.877
100mm =0.032	0.302	0.897	0.358	0.884	0.408	0.878
150mm =0.037	0.305	0.848	0.350	0.854	0.390	0.859
150mm =0.032	0.313	0.848	0.358	0.854	0.398	0.859

The f-value should be above 0.75 to minimise the risk of mould in dwellings.

NOTE: Because heat loss through windows and their frames is assessed separately, heat loss through the frame is not taken into account in the calculation of the ψ -value and f-value.

On-site Checklist

- Minimum frame overlap of 30mm
- Insulation with an R-value of at least 0.5 m²K/W applied to the soffit
- Equivalent conductivity of the baseplate no more than 10 W/mK

Site manager/supervisor.....

Site name.....

Plot number.....

Date.....